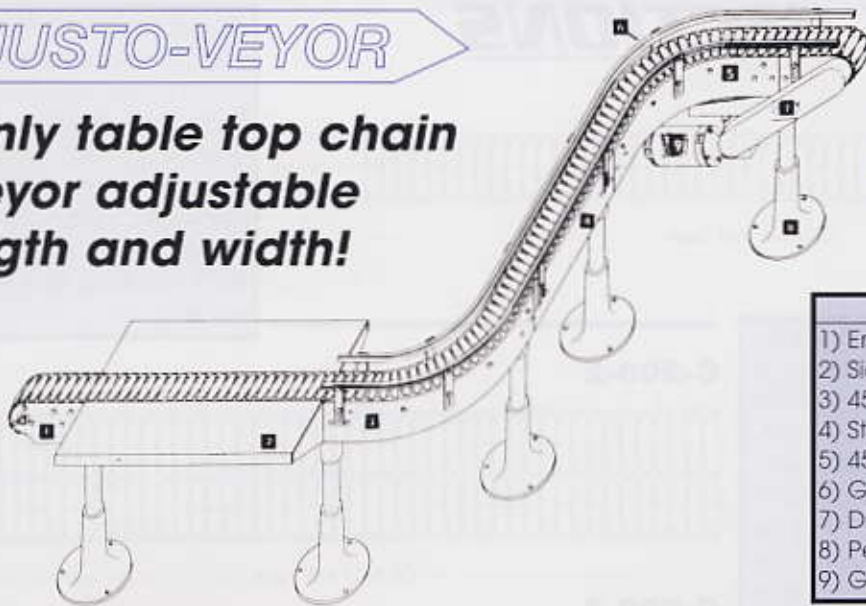


ADJUSTO-VEYOR

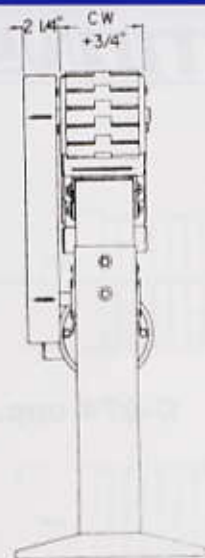
The only table top chain conveyor adjustable in length and width!

NEW!!!

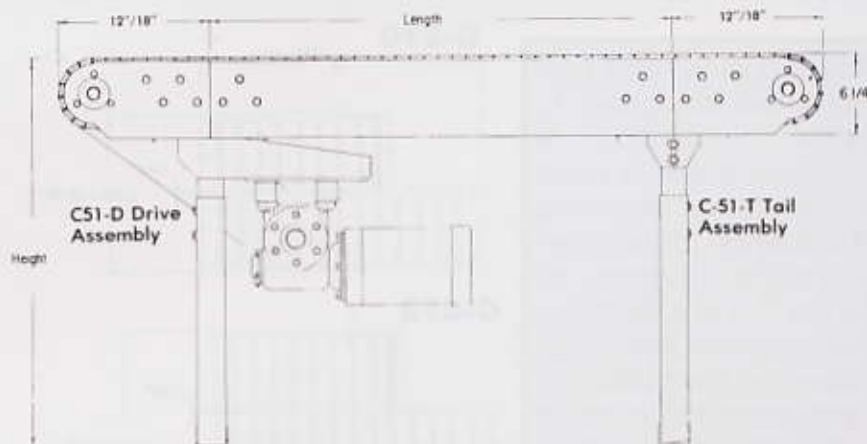


TYPE	MODEL
1) End Section	#C-51-T
2) Side Table	#C-490
3) 45°, Curve	#C-150
4) Straight Section	#C-100
5) 45°, Curve	#C-150
6) Guard Rails	#C-508
7) Drive Assembly	#C-51-D
8) Pedestal Base	#C-501
9) Gear Motor	

NEDCO offers a complete line of modular table top chain conveyor for smooth and continuous movement conveying applications. Special sections and accessories can be supplied. Unless otherwise noted, all equipment is pre-engineered for long dependable service with a minimum amount of maintenance, and because of out standard modular component design, when replacement parts are required they can be shipped immediately. In the design of a conveyor system it is often necessary to perform many functions other than general transport. Nedco has a complete line of accessory equipment for these supplementary functions. They can readily be incorporated with other Nedco standard conveyors to form a complete conveyor system.



C-51-D Drive Assembly



Drive assembly includes 18" drive end, motor mount and chain guard. (Other drive and tail assembly lengths available.) Motors can be supplied either constant speed or variable speed.

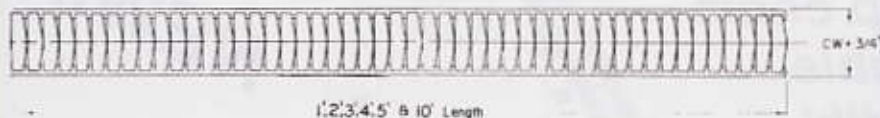
Quality In Motion

NEDCO

3

FRAME SECTIONS

C-100

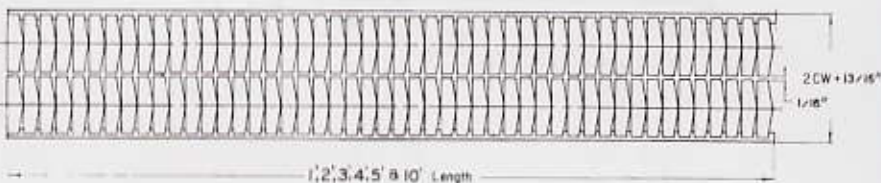


1, 2, 3, 4, 5' & 10' Length

Single lane intermediate bed sections for straight or curved found throughout catalog. Standard lengths 1'0", 2'0", 3'0", 4'0", 5'0" & 10'0". Other lengths available upon request. Standard width-chain width + 3/4". Available for 3 1/4, 4 1/2, 6, 7 1/2, 10 & 12" chains.

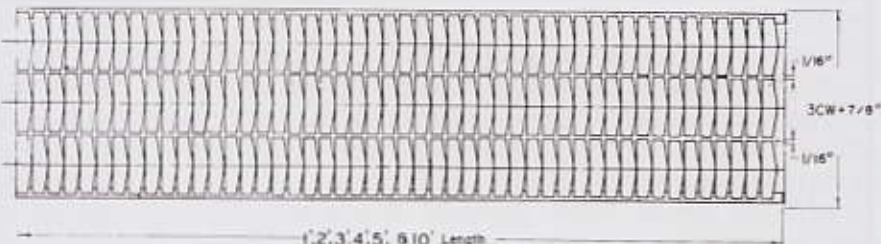
The 200 series multi-frame sections carry several lanes of product on one common frame, because there is only a very small gap between lanes it also allows lane changes without the need for dead plates. Depending on the layout it is often possible to drive the individual lanes from one common drive. Standard lengths 1'0", 2'0", 3'0", 4'0", 5'0" & 10'0". Other lengths available upon request. Standard number of lanes, 2, 3, & 4. Standard width-chain width + 3/4". Available for 3 1/4, 4 1/2, 6, 7 1/2, 10 & 12" chains.

C-200-2



1, 2, 3, 4, 5' & 10' Length

C-200-3

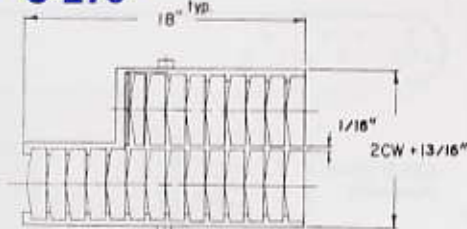


1, 2, 3, 4, 5' & 10' Length

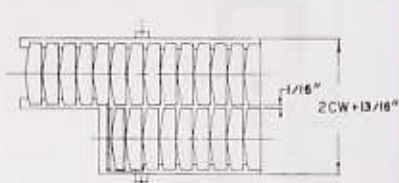
MULTI-LANE END SECTIONS

The 270 series end sections are designed to allow the addition or deletion of one or more lanes without disrupting the flow on other lanes. Standard number of lanes, 2, 3 & 4. End section supplied either non powered (as shown) or with extended shaft for powering terminating lanes. Available for 3 1/4, 4 1/2, 6, 7 1/2, 10 & 12" chains.

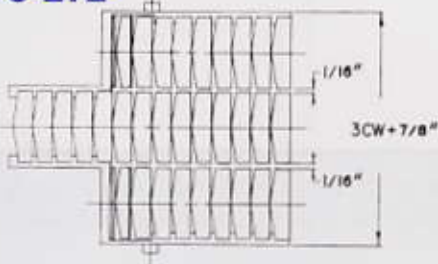
C-270



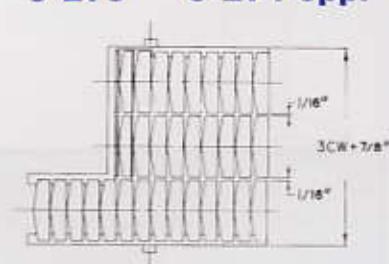
C-271



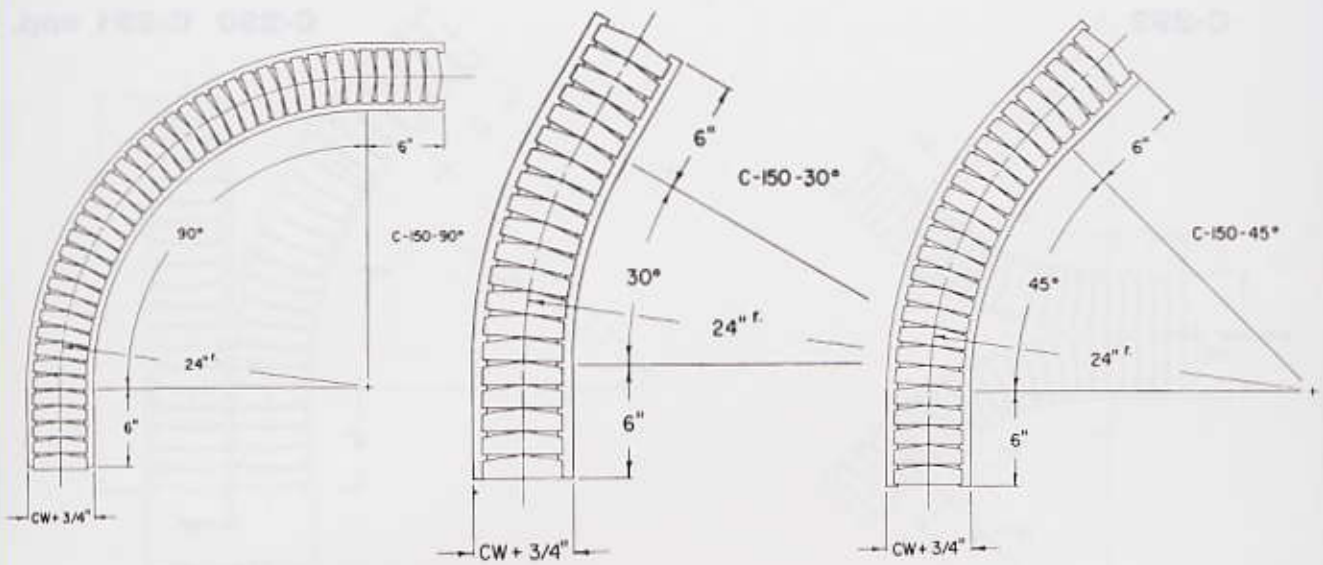
C-272



C-273 C-274 opp.

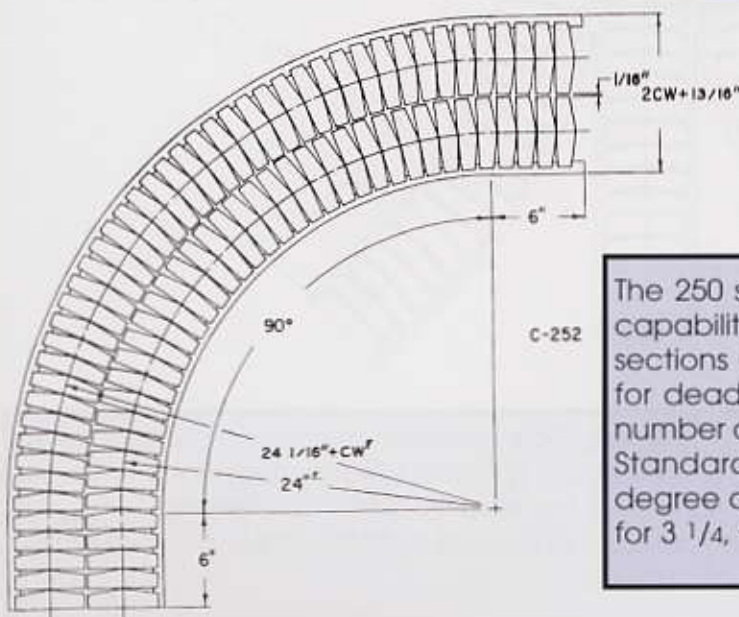


C-150 CURVE SECTIONS



Single lane curved bed sections bolt directly to type C-100 straight sections, and allow a change in direction without requiring a transfer or the need of an additional drive. Standard radius 24" (other radius available 18" & 36") standard degree curves 90, 45, 30. Other degree curves available upon request. Standard width = chain width + 3/4". Available for 3 1/4, 4 1/2, 6, 7 1/2, 10", & 12" chains.

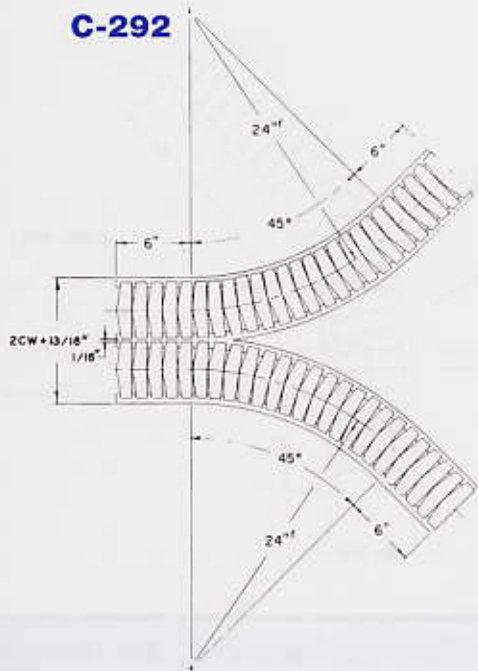
C-250 Multi-Lane Curves



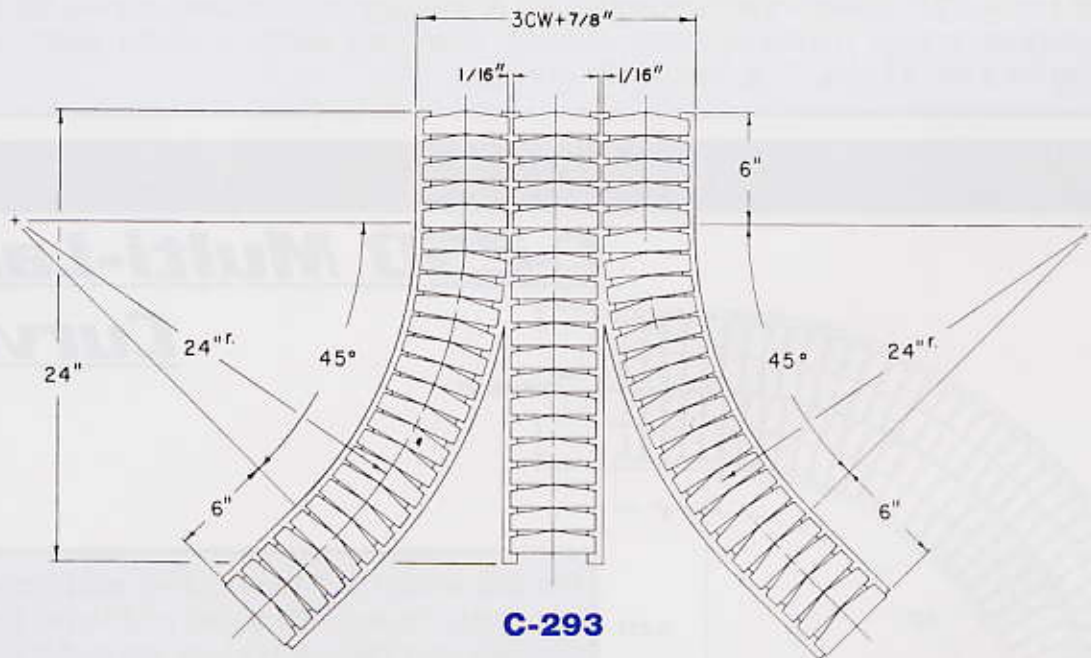
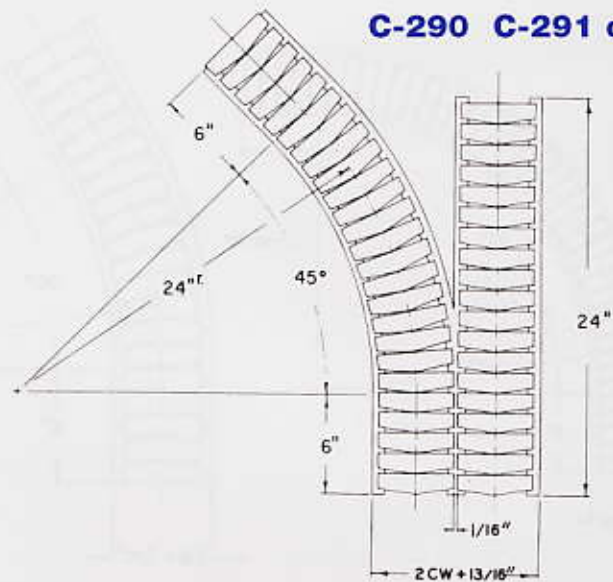
The 250 series multi-lane curves add cornering capability to the 200 series multi-lane straight sections and allow long runs without the need for dead plates or additional drives. Standard number of lanes, 2, 3 & 4. Standard radius = 24". Standard degree curves 90 & 45. (Other degree curves available on request.) Available for 3 1/4, 4 1/2, 6, 7 1/2, 10", & 12" chains.

C-290 SERIES FROG SECTIONS

C-292



C-290 C-291 opp.

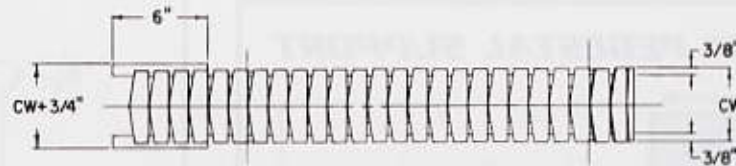


C-293

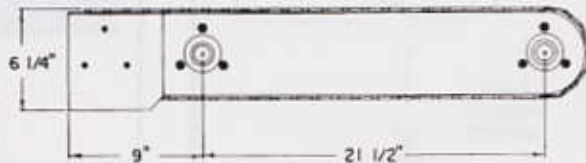
Frog sections are useful for combining or diverting flow, transfers from one line to another are easily accomplished because there is no need for dead plates. Standard arrangements are available on application. Sections may be used for either converging or diverging applications. Frog sections will accept straight or curved sections of like number lanes. Available for 3 1/4, 4 1/2, 6, 7 1/2, 10", & 12" chains.

C-450 SERIES FLUSH END SECTIONS

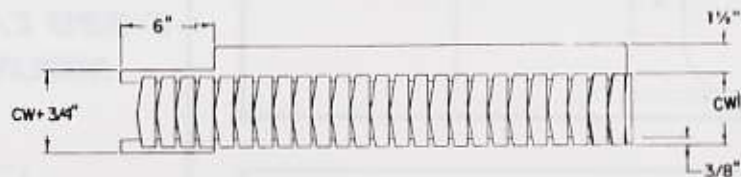
Flush sections are most commonly used in conjunction with other equipment in order to provide a minimum side transfer. Because the chain overhangs the bed section it may be brought as close as possible to adjoining equipment and eliminate the need for dead plates. Available for 4 1/2, 6, 7 1/2, 10", & 12" chains.



C-450 FLUSH END SECTION



C-455 USED WITH INTERIOR CHAIN GUARD FOR 3 1/4" CHAIN ONLY.

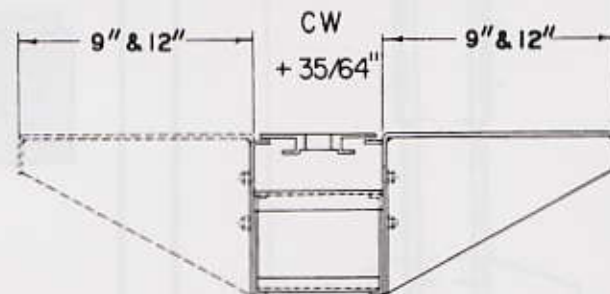


C-455 FLUSH END SECTION



C-490-9"
C-490-12"
SIDE TABLE

Side tables are available in 1'0" thru 5'0" lengths for one or both sides of sections, stainless steel, 9" and 12" width standard, other widths available.

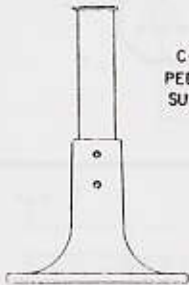
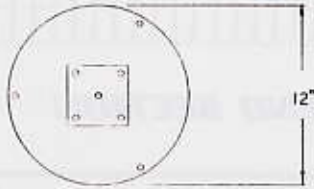


SUPPORTS

C-501 PEDESTAL SUPPORT

PEDESTAL SUPPORT

PART #	A=T.O.C.*
C-501-1	21-28
C-501-2	27-34
C-501-3	33-40
C-501-4	39-46
C-501-5	45-52

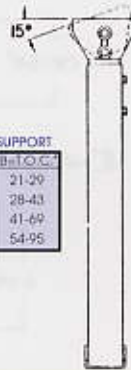


C-501
PEDESTAL
SUPPORT
"A"
= TOP OF
CHAIN

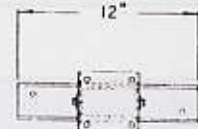
C-502 FORMED SUPPORT

FORMED SUPPORT

PART #	B=T.O.C.*
C-502-1	21-29
C-502-2	28-43
C-502-3	41-69
C-502-4	54-95

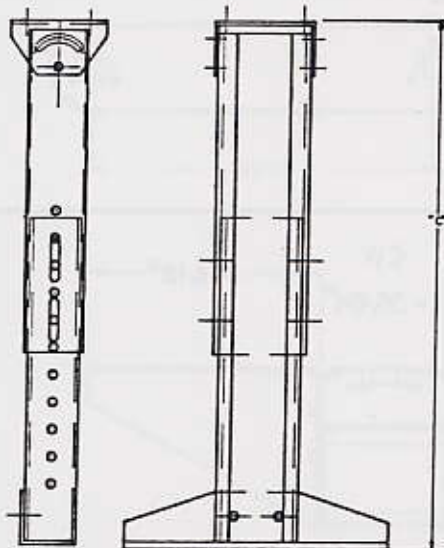


C-502
FORMED
SUPPORT

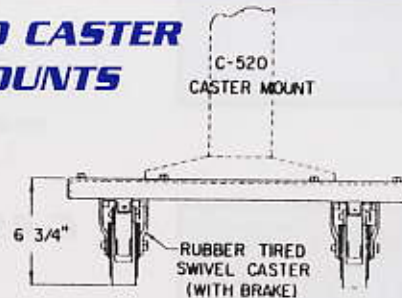


"B"
= TOP OF
CHAIN

C-500 CHANNEL SUPPORT



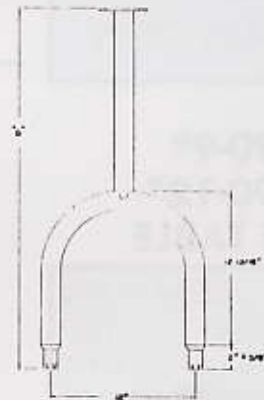
C-520 CASTER MOUNTS



S516 SANITARY SUPPORT

SANITARY SUPPORT

PART #	T.O.C.*
S516-1	24"
S516-2	30"
S516-3	36"
S516-4	42"



PEDESTAL SUPPORT

PART #	A=T.O.C.*
C-501-1	21-28
C-501-2	27-34
C-501-3	33-40
C-501-4	39-46
C-501-5	45-52

FORMED SUPPORT

PART #	B=T.O.C.*
C-502-1	21-29
C-502-2	28-43
C-502-3	41-69
C-502-4	54-95

CHANNEL SUPPORT

PART #	C=T.O.C.*
C-500-1	18-22
C-500-2	22-33
C-500-3	31-47
C-500-4	X

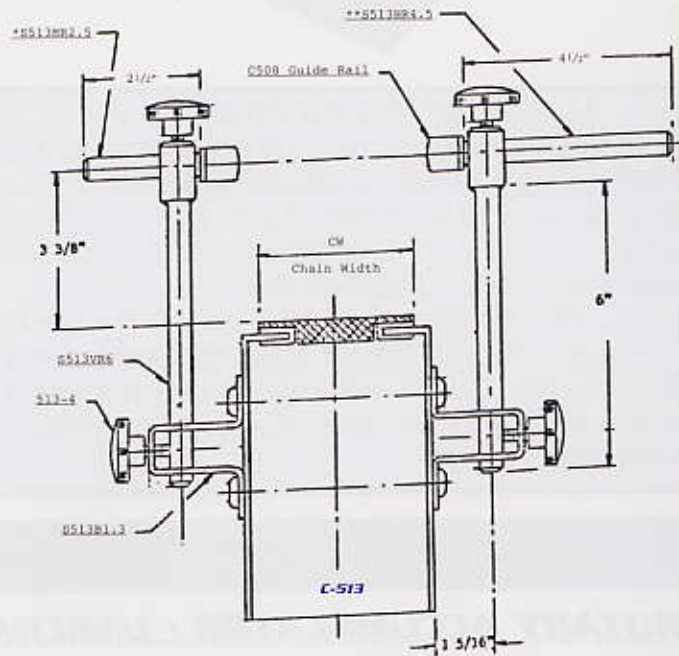
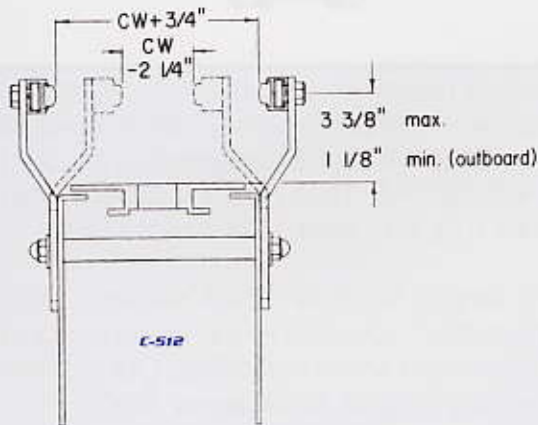
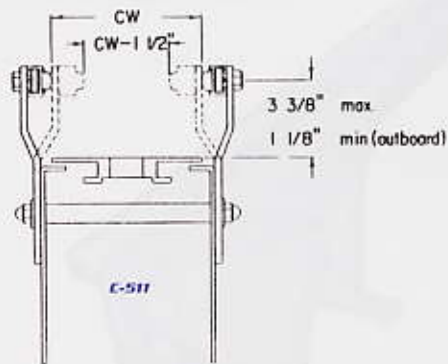
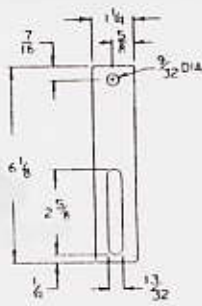
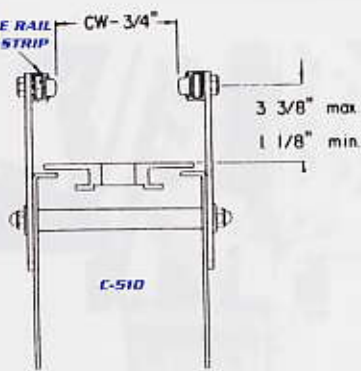
SANITARY SUPPORT

PART #	T.O.C.*
S516-1	24"
S516-2	30"
S516-3	36"
S516-4	42"

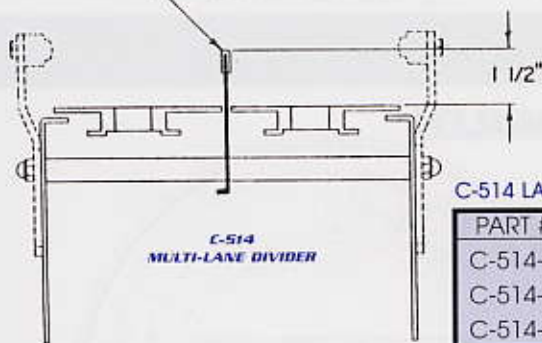
*T.O.C. Top of chain

GUIDE RAIL OPTIONS

C-508
ALUMINUM GUIDE RAIL
WITH-FAX WEAR STRIP

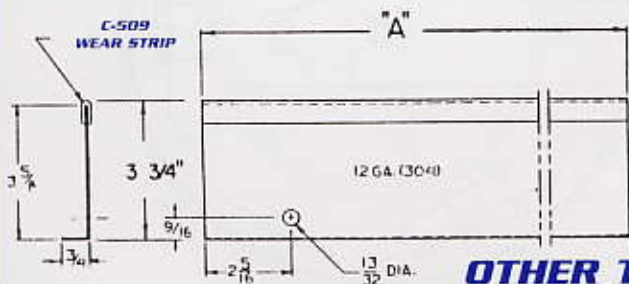
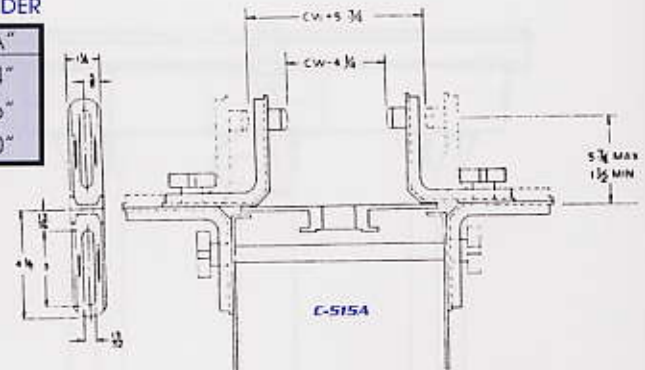


C-509 SNAP ON WEAR STRIP



C-514 LANE DIVIDER

PART #	"A"
C-514-1	24"
C-514-2	36"
C-514-3	60"



OTHER TYPES OF GUIDE RAIL AVAILABLE

Adjustable guard rails are best suited where several size products are being handled and must be contained by guard rails. If variation in width is not required, fixed guards offer a cost advantage.